



AIRWAVE® WIRELESS MANAGEMENT SUITE 6.0

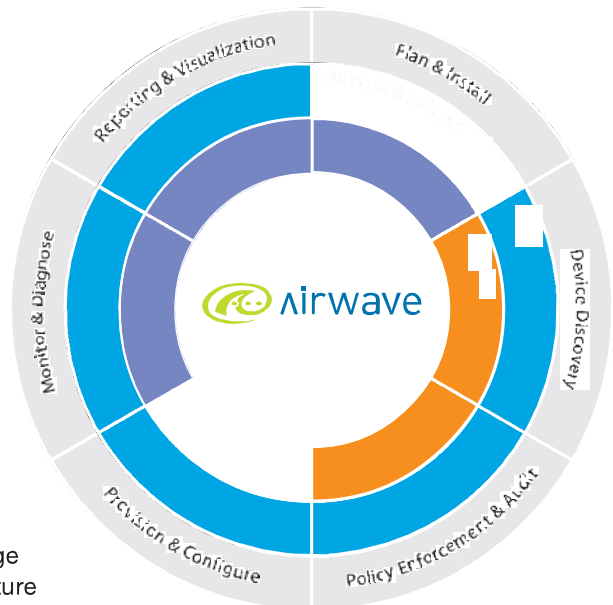
The Next Generation of Wireless Management - for the Entire IT Staff

In countless corporations, learning institutions and organizations, wireless networks have rapidly evolved into mission-critical networks, and are now the primary means of connection for a significant portion of users.

This radical change in networking has occurred in just a few years – and the pace of change is only going to accelerate in 2008 and beyond:

- Wireless LANs will continue to expand in size and capacity, forcing IT to implement new policies to manage networks of unprecedented scale
- New technologies like 802.11n will deliver significant improvements in capacity and reliability – but will challenge IT departments to operate both new and legacy infrastructure simultaneously.
- Many more users will connect via wireless networks, using a dizzying array of new wireless devices and applications – presenting the IT helpdesk with a major new user support challenge.

The new AirWave Wireless Management Suite v6.0 software equips the entire IT staff – from network engineers to the Level One helpdesk – with the tools they need to support these increasingly complex and mission-critical next generation wireless networks.

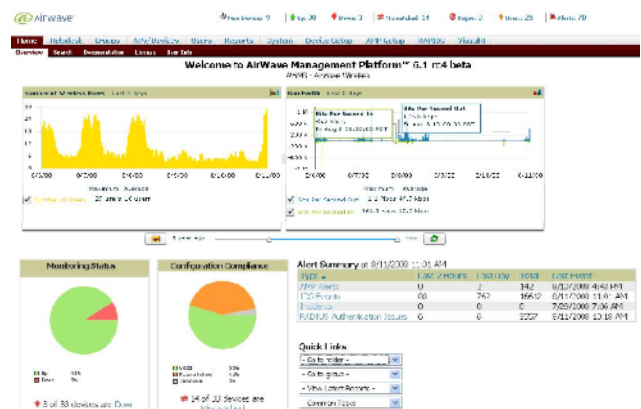


AIRWAVE 6.0 — WHAT'S NEW!

- Specialized monitoring screens and diagnostic tools for the IT helpdesk
- Enhanced support for new 802.11n products from leading enterprise vendors
- Centralized management of the largest WLANs in the world through the enhanced AirWave Master Console
- More flexible and customizable user interface and reports
- Archiving of device configurations for compliance
- Support for RFID tags

EQUIPPING THE HELPDESK TO SUPPORT COUNTLESS WIRELESS USERS, DEVICES, AND APPLICATIONS

- **New end-user diagnostic tools:** 6.0 gives the helpdesk an array of new diagnostic tools to quickly diagnose and resolve user problems without escalation to network engineers and wireless specialists – reducing support costs and increasing user satisfaction.
- **Native integration with trouble-ticket systems:** 6.0 integrates with existing trouble-ticket and service desk solutions to reduce the number of tools the helpdesk staff must use to track wireless incidents.



AIRWAVE WIRELESS MANAGEMENT SUITE 6.0 HIGHLIGHTS

- **Advanced trend analysis:** 6.0 uses sophisticated trend analysis to identify problems with specific components of the wireless infrastructure and client devices, helping IT resolve the thorniest problems that cause repeated incidents.
- **Customizable user interface and reports:** AirWave's easy-to-use interface becomes even more customizable in 6.0, allowing various members of the IT staff to set their own pagination preferences, to specify alarm notification preferences, and generate more specialized reports.

MANAGING THE LATEST TECHNOLOGIES, ARCHITECTURES, AND PRODUCTS

- **Support for enterprise-grade 802.11n products:** AirWave 6.0 supports new enterprise-grade 802.11n products from leading vendors – and provides an array of new statistics and RF alerts to help IT ensure that these 802.11n networks are performing optimally.
- **Capacity planning reports:** IT organizations considering an upgrade to new 802.11n technology need accurate capacity reports to determine where the new technology is most needed – and to ensure that the technology is delivering the expected performance. 6.0's new capacity reports provide the critical information IT needs to assess the impact of this exciting new technology.
- **RFID Tags:** 6.0 supports integration with leading RFID tag solutions for organizations that are using wireless tags to track the location of their assets.

CENTRALIZED MANAGEMENT OF THE LARGEST WLANS IN THE WORLD

- **Global management of group configuration policies:** The enhanced AirWave Master Console in 6.0 allows IT organizations with tens of thousands of wireless access points, controllers and other network devices to manage all device configurations from a single console – for maximum efficiency and security.
- **Centralized configuration audits:** 6.0 also lets IT auditors conduct global audits of device configurations – to demonstrate that all devices comply with the organization's security policies.
- **Archiving of configuration policies:** The 6.0 software permits IT to archive previous device configurations – a critical security requirement for organizations subject to strict compliance programs.



www.airwave.com

1700 S. El Camino Real, Suite 500. San Mateo, CA 94402 | Tel. +1 650.286.6100 | Fax. +1 650.286.6101