

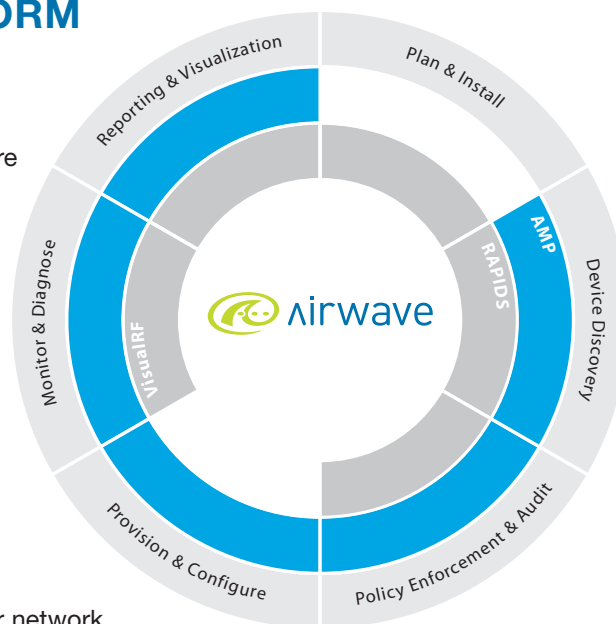


## AIRWAVE® MANAGEMENT PLATFORM

Wireless networks were supposed to be easy, reliable and affordable. Now they are.

The AirWave Management Platform (AMP) software is the core component of the AirWave Wireless Management Suite, built to give you complete control over your wireless network. From one integrated easy-to-use console, you can see all wireless users and devices anywhere on your WLAN. With AMP, you can remotely manage device configurations, policies, RF settings, and firmware – even if your WLAN has a global reach and covers thousands of locations.

AMP supports the wireless hardware of nearly all the major vendors – including Cisco (Aironet, Airespace, and earlier models), HP ProCurve, Aruba, Proxim, Symbol, Enterasys, Juniper, LANCOM, Nomadix, Avaya, Enterasys, Colubris, Alcatel-Lucent, Meru, Trapeze, and others. AMP supports both “intelligent” and “thin” APs, mesh devices, and outdoor architectures. It installs quickly and easily on a server in your network operations center, and gives you a comprehensive web-based overview of your entire WLAN, with the ability to quickly click through to the most comprehensive, granular user and device detail available.



### FEATURES AND BENEFITS

- Automated device discovery across any network infrastructure (WAN or LAN)
- Extensive logging and storage of wireless data for reporting and analysis
- Group-based policy definition for efficient management of large networks
- Centralized device configuration to eliminate manual processes and opportunity for human error
- Compliance audits to enforce your security policies at all times
- User-based monitoring for real-time information and rapid troubleshooting
- Diagnostics and alarms for fast problem resolution
- Integrated reporting package for intelligent planning and performance measurement
- Role-based allocation of management and support duties
- Integration with popular IT management tools such as Remedy

### SECURITY IS IMPROVED

AMP lets you implement and enforce your Wi-Fi security policies across the entire WLAN. AMP ensures that your entire mobile infrastructure, including wireless access points and switches, is always configured in strict accordance with your security policies. Any non-compliant devices are flagged for further follow-up.

### MANAGEMENT IS SIMPLE AND FLEXIBLE

With AMP's easy-to-use interface, your entire network is visible and manageable. For instance, you can control the channel, transmission power, encryption methods, and even the firmware version on thousands of access points, simultaneously.

### VISIBILITY INCREASES YOUR EFFICIENCY

AMP's live monitoring lets you see exactly who is connected to your Wi-Fi network, where they are, and how the network is performing. AMP's integrated reporting package tells how your network is being used and helps you intelligently plan for growth.

### WI-FI ROI IS INCREASED

AMP drives down wireless support costs by eliminating the root cause of many Wi-Fi problems and enabling faster trouble-shooting. Your Help Desk can now quickly resolve most end-user issues, freeing your highly trained network engineers to handle more pressing matters. And with AMP, you can extend the useful life of your hardware and manage technology change smoothly.

# AIRWAVE MANAGEMENT PLATFORM

## FUNCTIONALITY AND SPECIFICATIONS

### Device Discovery

- Uses SNMP, HTTP, CDP, and other methods to locate all Wi-Fi devices
- Operates in any network environment

### Policy Enforcement and Audit

- Uses group-based 'templates' for efficient central management of any number of access points
- Routinely audits each Wi-Fi device's configuration and compares it to policy
- Sends you alerts for misconfigured devices, and automatically performs repairs
- Provides password-based login and administrative user permissions for multiple classes of users
- Keeps detailed audit logs of changes made by all users

### Provisioning and Configuration

- Enables group-based policy definition for efficient central management of thousands of access points
- Ensures that all devices are using approved, up-to-date versions of vendor firmware
- Supports multiple WLAN architectures (including 'hybrid' networks with both intelligent APs, WLAN switches and even mesh devices)
- Automatically assigns IP addresses to newly-installed access points

### Monitoring and Diagnostics

- Monitors every device and user on the wireless network live
- Identifies and searches for users by username
- Graphical views show current users and throughput of every device
- User views show signal strength and roaming history of each user
- Performs intelligent diagnostics and sends automated alerts when problems are detected
- Integrates with many popular network management systems for seamless management of wired and wireless networks
- Optimized to use minimal network overhead for SNMP monitoring
- Supports networks with high-latency or intermittent connections

### Reporting and Visualization

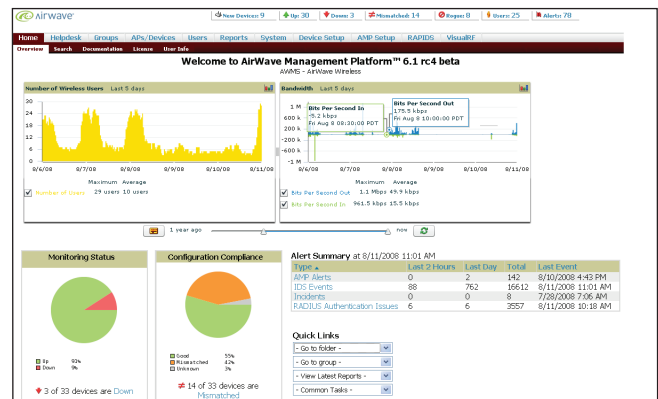
- Integrated reporting package includes use, inventory, client session, device uptime reports and more
- Exports all reports (via XHTML)
- Automated email distribution lists
- Fully customizable reports by group, time, etc.
- Integrates with VisualRF to provide real-time RF monitoring data
- Maintains up to one year of historical data

### Platform Data

- Centralized in Network Operations Center (no local agents required)
- Installs on standard PC hardware
- Runs on standard Linux operating system
- Web-based user interface
- Device communication through SSH, Telnet, SNMPv1/v2c/v3, HTTP/HTTPS
- Scalable database storage for fast report generation
- Standard XML API for third-party applications
- Unlimited unique, role-based administrative log-ins
- Scalable architecture to 10,000+ wireless access points

## Supported Hardware Vendors

- Aruba Networks
- Avaya
- Colubris Networks
- HP ProCurve
- LANCOM Systems
- Nomadix
- Trapeze/Belden
- Alcatel-Lucent
- Cisco (Aironet & Airespace)
- Enterasys
- Juniper Networks
- Meru
- Proxim
- Symbol/Motorola



AirWave Management Platform Dashboard View

## ORDERING INFORMATION

AirWave Wireless Management Suite (AWMS) software is available in multiple versions depending on network size, as indicated in the Software Part Number column below. Failover servers are also available for use in mission-critical environments. For added convenience and reliability, appliance versions of the AirWave solution are available – these are indicated in the Hardware Part Number column. Customer-provided hardware platforms may also be used.

Number of Devices Supported	Software Part Number	Hardware Part Number
2,500	AWMS-Enterprise	AWMS-HW-ENT
1,000	AWMS-Professional	AWMS-HW-PRO
500	AWMS-500	AWMS-HW-PRO
200	AWMS-200	AWMS-HW-PRO
100	AWMS-100	AWMS-HW-PRO
50	AWMS-50	AWMS-HW-PRO
25	AWMS-25	AWMS-HW-PRO
Up to 30 AMP Servers	AWMS-MASTER	AWMS-HW-PRO
Up to 50 AMP Servers	AWMS-MASTER	AWMS-HW-ENT



[www.airwave.com](http://www.airwave.com)

1700 S. El Camino Real, Suite 500. San Mateo, CA 94402 | Tel. +1 650.286.6100 | Fax. +1 650.286.6101