

New Product!

Data Sheet

HIGHLIGHTS

- Cost-effective network capture appliance with small, “portable” footprint
- Complete visibility into your network in real time and over an extended period of time
- Continuous collection of network statistics with reporting capabilities
- Unique and powerful Atlas Express “drill-down” analysis facility provides access across all seven OSI network layers
- Includes 1 free year of software updates so you can benefit from all the fixes and enhancements that ClearSight provides to its customers on a regular basis

BENEFITS

- Fully turnkey solution. No complicated setup or installation procedures
- Remote access capable through an IP network
- Show network statistics and information with trending graphs. Easily identify throughput problems and anomalies
- Show packet decodes and perform packet analysis for nearly 1,000 protocols with Wireshark integration. Perform packet analysis and decode on the fly
- Reconstruct and replay both video and voice data in real time and under post-capture scenarios
- Network Time Protocol support means that you can with high precision, timestamp network events making the chore of troubleshooting fast and accurate

Introduction

The Network Time Machine® (NTM) is a family of appliance products that allows you to capture and store enormous quantities of network data and then be able to effortlessly and quickly browse through and review the data in order to view events such as anomalies and intrusions. The NTM enhances business continuity by keeping networks operating running correctly and smoothly and preventing outages.



Figure 1: NTM Express

The NTM Express (see Figure 1) is the newest member of this family. The product is a cost effective network recorder with a small footprint. Weighing under 20 pounds, it has a 14” short-depth 1U form factor and is portable and easy to transport. The chassis is also rack-mountable.

But do not let the size fool you, this powerful, fully turn-key solution boast high performance capabilities. And it has the ability to collect data even at very high network utilization rates, leaving you protected even when your network is in peak use.

The NTM Express can be used to effectively manage and diagnose problems affecting enterprise networks. Its powerful capabilities maximize the network administrator’s ability to proactively monitor and analyze their networks to maintain network uptime and stave off unexpected outages.

Users can ensure the health and reliability of their networks by pinpointing problems and performance bottlenecks that other network monitoring and analysis solutions cannot even detect.

Fully protocol analysis functionality is supported through the ClearSight Analyzer product (CSA) which has been integrated into every NTM solution including the Express one providing complete visibility across every single layer of the protocol stack.

Atlas Express

A compact version of Atlas, ClearSight's unique network traffic navigation system is bundled with every single NTM. From the Atlas Express, new and powerful views based on the data stored in the NTM storage subsystem are available.

A key feature of Atlas and the NTM platform is the ability to capture, index, and classify complex network information. This data is then used to create unique views that are critically valuable to assisting network engineers and administrators to manage and service their networks.

These views are shown in the Atlas Express workspace, and are easily accessible by a few mouse clicks. Atlas Express supports four main upper layer application types: HTTP, H.323, SIP, and RTP.

Atlas Express is bundled with NTM Express and is available at no additional cost.

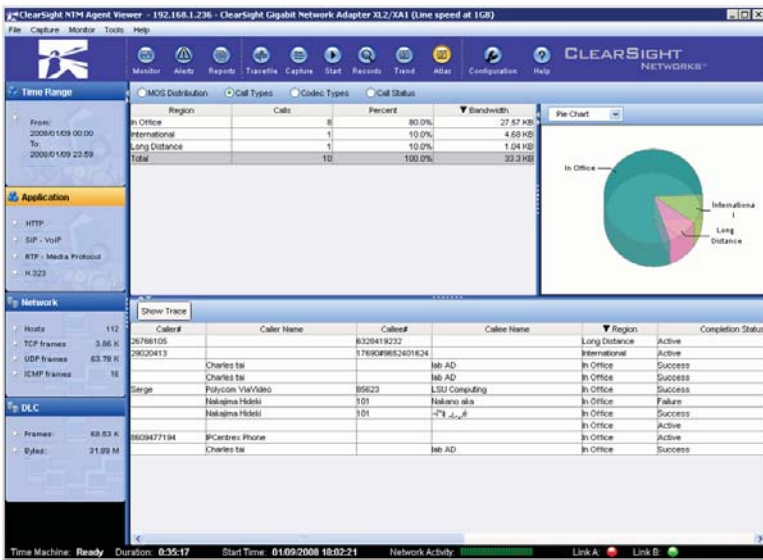


Figure 2: Atlas Express

Remote Access

An NTM Express can be managed through an Agent Manager which can be located locally on any Windows based PC. The client can access and control an NTM Express unit from anywhere in the world through an IP network. The NTM Express Agent Manager can in turn manage multiple numbers of NTM Express and other ClearSight distributed products.

FEATURES

Product Name	NTM Express
Model Number	CSR-EXPRESS-A: 10/100/1000 MbE version CSR-EXPRESS-1-A: 10/100 MbE version
Capture Filter	No
Save Filter	Yes
Display Filter	Yes
Payload Slicing	No
Realtime Alert	Yes
Realtime Statistics (RMON1)	Yes
Realtime Flow Analysis	Yes
Post Analysis	Yes
Realtime Report	Yes
History Report	Yes
Trace File Report	Yes
Atlas Express	Standard
Remote Access	Yes
Storage Capacity	500 GBs (3 Gb/s SATA technology)
Storage Array Support	No
Redundant Power Supply	No
RAID Level	No

HARDWARE SPECIFICATIONS

Product Name	NTM Express
CPU	Single Quad Core Intel x3320, 2.50Ghz, 1333Mhz, 6MB L3 Cache
OS	Microsoft Windows XP
Memory	4 GB DDR3 1333Mhz Unbuffered DIMMs
Drives	Storage Capacity: 500 GBs
Monitor/Capture Ports	2 Ports supporting 10/100 MbE or 10/100/1000 MbE
Power Supply	Auto-switching 260 Watt 100-240V, 60-50Hz, 4 Amp Max
Physical Dimensions	Short Depth 1U 14" (D) x 16.75" (W) x 1.7" (H) 356mm (D) x 426mm (W) x 43mm (H)
Weight	14.5 lbs (6.6 kgs)
Temperature	Operating Temperature Range 10 - 35°C (50° to 95° F) Non-Operating Temperature Range -40 - +70°C (-40° to 158° F) Humidity Range 8 - 90% non-condensing Non-Operating Humidity Range 5 - 95% non-condensing
1 year warranty parts and labor included; additional years can be purchased	



46401 Landing Parkway
Fremont, CA 94538-6496

For more information, call or email us:
Telephone (US Toll Free): 1-800-825-7563
Telephone (International): +1-510-824-6000
Fax: 1-510-824-6100
Email: sales@clearsightnet.com

www.clearsightnet.com

©2008-2009 ClearSight Networks. All rights reserved. ClearSight, ClearSight Apex, ClearSight Cronos, Network Time Machine, Network Time Machine Atlas and Network Time Machine Express are trademarks of ClearSight Networks. Wireshark is a registered trademark of Gerald Combs. All other names mentioned are trademarks, registered trademarks or service marks of their respective owners. 04/09