

# XX-1800G

PROVIDES THE DATA THAT COUNTS FOR NETWORK MONITORING

## AGGREGATION, REPLICATION, ADVANCED FILTERING, LOAD BALANCING

The Profitap XX-1800G is a high-density Network Packet Broker, bringing you the power and flexibility of network traffic management with a total throughput of 1800 Gbps in a single 19" rack unit.

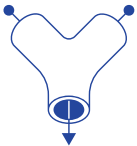
The XX-1800G features 48 SFP28 (1/10/25 Gbps) and 6 QSFP28 ports (40/100 Gbps) providing aggregation, replication, filtering and load balancing in very high bandwidth port monitoring and analysis scenarios.



## KEY BENEFITS

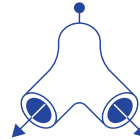
- Optimize traffic and deliver actionable data to monitoring and security tools.
- Leverage existing infrastructure for a cost-effective increase in capabilities.
- High performance and throughput in a compact, high density footprint.
- Advanced integration with physical and virtual traffic access, analysis, and security systems.

## KEY FEATURES



### AGGREGATION

Aggregate two or more incoming streams of data into a single stream. Combine with the replication and filtering features to send different parts of the aggregated traffic to different output ports.



### REPLICATION

Replicate a stream of data to multiple output ports. Combine with the aggregation and filtering features to send different parts of the aggregated traffic to different output ports.



### FILTERING

Ensure optimum efficiency of monitoring, security tools, and bandwidth utilization by filtering traffic such that only appropriate data is sent to these network tools.



### LOAD BALANCING

Distribute the traffic load between different output ports to optimize resource utilization.

## USE CASES

- Balance traffic over multiple monitoring and security tools: allows incoming traffic to be distributed evenly and dynamically across multiple output ports.
- Aggregate multiple traffic streams into higher speed links.
- Replicate traffic to multiple monitoring and security tools: outputs copies of incoming traffic to multiple output ports.
- Filter specific parts of the traffic based on a wide array of allow and drop rules to ensure the appropriate traffic is sent to the appropriate tools.

# HIGHLIGHTS

- Local and remote management (CLI, SSH, GUI, SNMP, Syslog)
- RESTful API support
- Layer 2-4 filtering
- Flexible role-based management access
- TACACS+/RADIUS authentication
- Centralized authentication via Profitap Supervisor (local users, TACACS+, RADIUS)
- Redundant, hot-swappable, Platinum efficiency PSUs and fan modules
- High-density, 1800 Gbps throughput in a 1U footprint
- Supports 1G, 10G, 25G, 40G, 100G
- Supports 4 x 10G and 4 x 25G splits on QSFP28 ports 53 and 54 via fanout cables



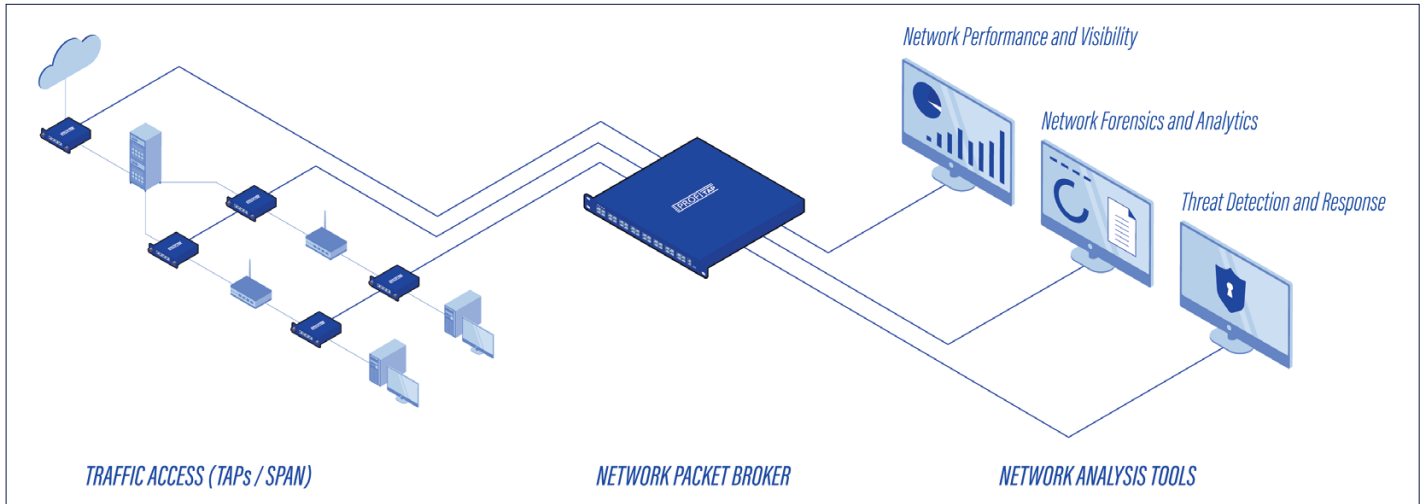
## TECHNICAL SPECIFICATIONS

<p><b>CONNECTORS</b></p> <p>48 x SFP28 ports 6 x QSFP28 ports 1 x RJ45 management port 1 x RJ45 console port</p>	<p><b>LEDs</b></p> <p>1 x System status 1 x Fan status 1 x PSU1 status 1 x PSU2 status</p>	<p><b>ACCESSORIES</b></p> <p>2 x 450 W, 80+ Platinum, 100-240 VAC, 50-60 Hz or 2 x 450 W, -40V--60 VDC</p>
<p><b>WEIGHT</b></p> <p>11 kg — 24.25 lb</p>	<p><b>COMPLIANCE</b></p> <p>RoHS — CE — FCC</p>	<p><b>DIMENSIONS (WxDxH)</b></p> <p>440 x 440 x 44 mm — 17.32 x 17.32 x 1.73 in</p>

## ORDER REFERENCES

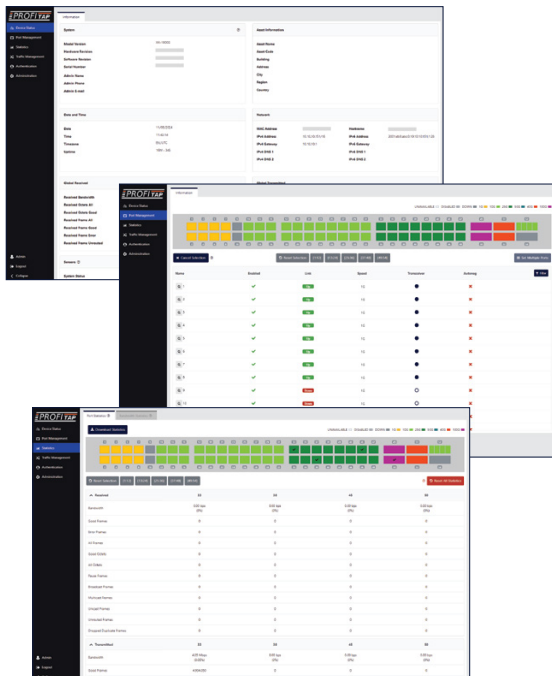
<b>PORT LICENSE</b>	<b>AC (2 x 450 W, 100-240 VAC) PSU</b>	<b>DC (2 x 450 W, -40V--60 VDC) PSU</b>
24 x 1/10/25G SFP28, 2 x 40/100G QSFP28	XX-1800G-242-AC	XX-1800G-242-DC
48 x 1/10/25G SFP28, 6 x 40/100G QSFP28	XX-1800G-486-AC	XX-1800G-486-DC

# INTEGRATION



## XX manager

XX-Manager is a web-based interface integrated in every XX-1800G unit, allowing easy access to the configuration and monitoring of XX-1800G settings and behavior from any OS or platform.



### DEVICE STATUS

Device status offers a quick overview of operational statistics related to the packet broker hardware.

### PORT MANAGEMENT

Port management offers instant overview of port status and speed. Users control the configuration of all SFP modules, where each module offers additional information in the specific status section.

### PORT STATISTICS

Port statistics displays and monitors the statistics counter for each of the device interfaces.